

## COB LED STRIP



### Application

- .Conference/Meeting rooms
- .Factories and Offices
- .Commercial Purposes
- .Residential/Institution Buildings
- .Hotels

### Key Features

Model:	CB-CLR-24V-5M-10MM-RGB
Input voltage :	24VDC
Beam angle :	141°
Max.power:	15.2W/(1m)
Power range:	12.8~15.2W(1m)
Typical Power:	14W(1m) (@RGB)
Mounting :	3M tape
Max.length :	5000mm
Protection class	IP20
Cutting unit:	42leds/50mm
LED pitch :	/
Warranty:	3 years indoors / 2 years outdoors
Ta.	-25°C~45°C
Initial MacAdam:	/
Ra typ:	/
Color:	RGB
Copper foil:	2oz
Efficacy:	/
Life longer than:	50000H

### Data Sheet

CRI	Color	wave length	Lumen(lm/m)	lm/W	Power	ErP 2019
/	R	R:615-625nm	90~108	20	4.6~5.4W/m	/
/	G	G:525-535nm	322~378	70	4.6~5.4W/m	/
/	B	B:450-465nm	36~44	10	3.6~4.4W/m	/
/	RGB	/	448~532	35	12.8~15.2W/m	/

1.The tolerance of output data can be vary up to 10%.

2.the output data tested according to IES TM-30-15.

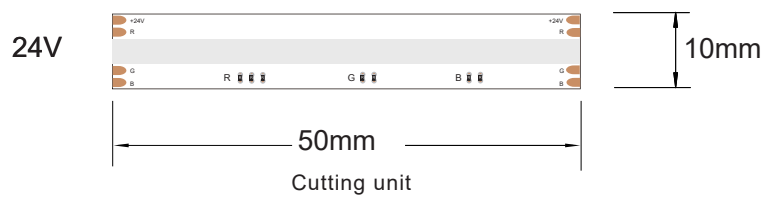
3.the output data is based on IP20/1mterter , data of 5m in only for reference.

4.IP protection process leads changes to size, CCT and luminous flux.

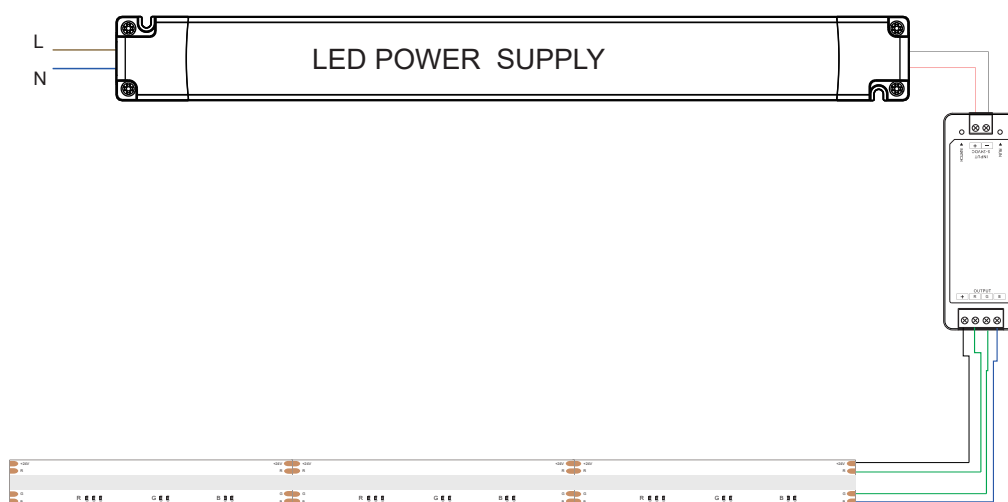
## COB LED STRIP



### Dimension



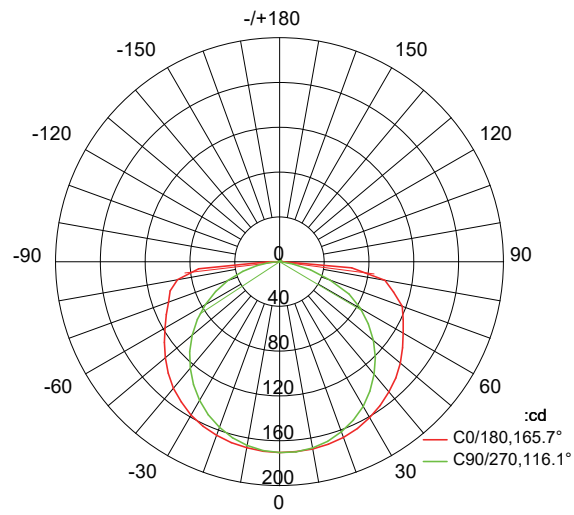
### Wiring Diagram



## COB LED STRIP



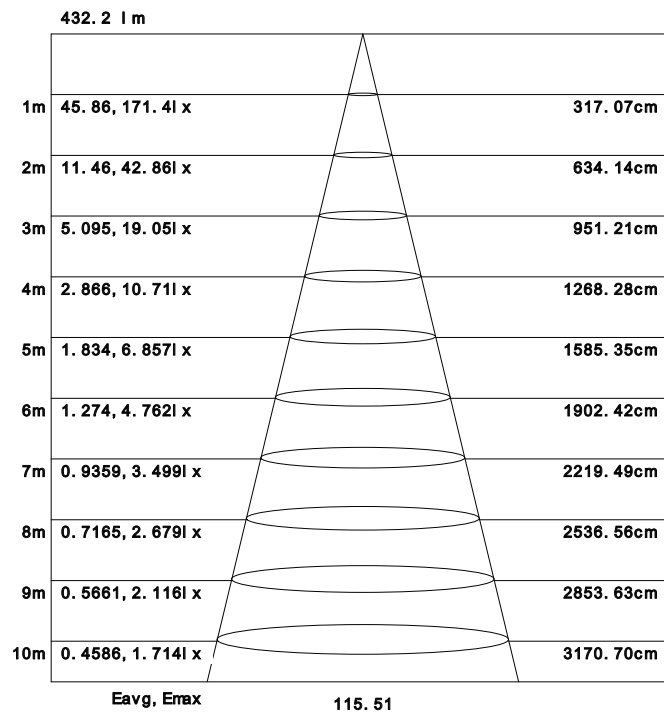
### Light Distribution Curve



AVERAGE BEAM ANGLE(50%):140.9DEG

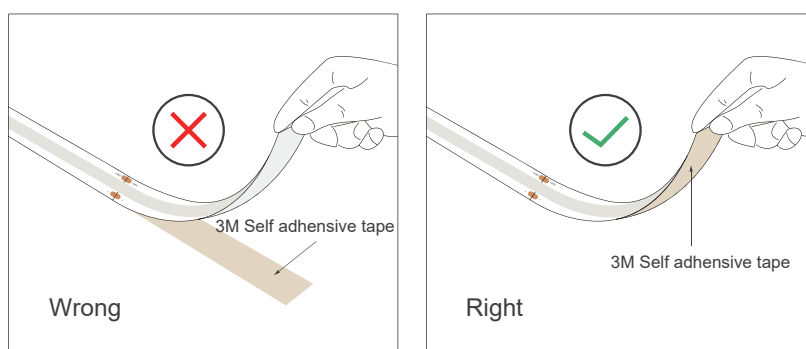
\*Photometric of 1M strip

### Lux - Distance Curve





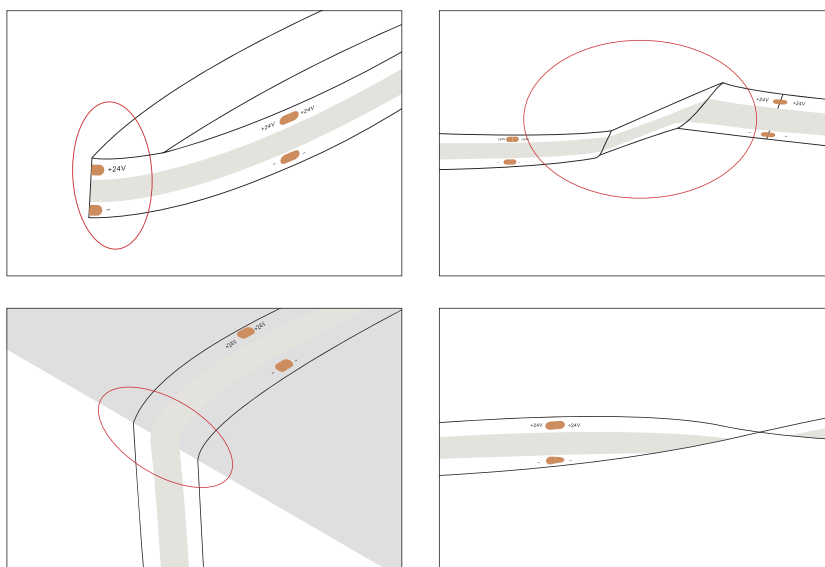
## LED Strip Installation



If the led strip needs to be torn up, please make sure that the self adhesive tape is torn with the led strip, otherwise the led strip will be damaged.

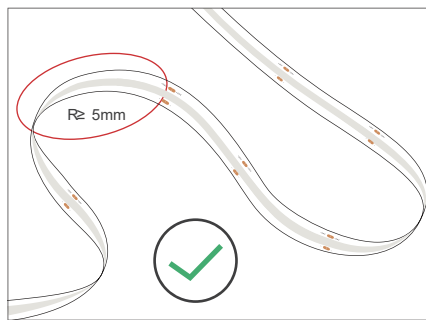
When install the led strip, please note the installation technique.

The led strip can be bent, but not distorted, as shown below.

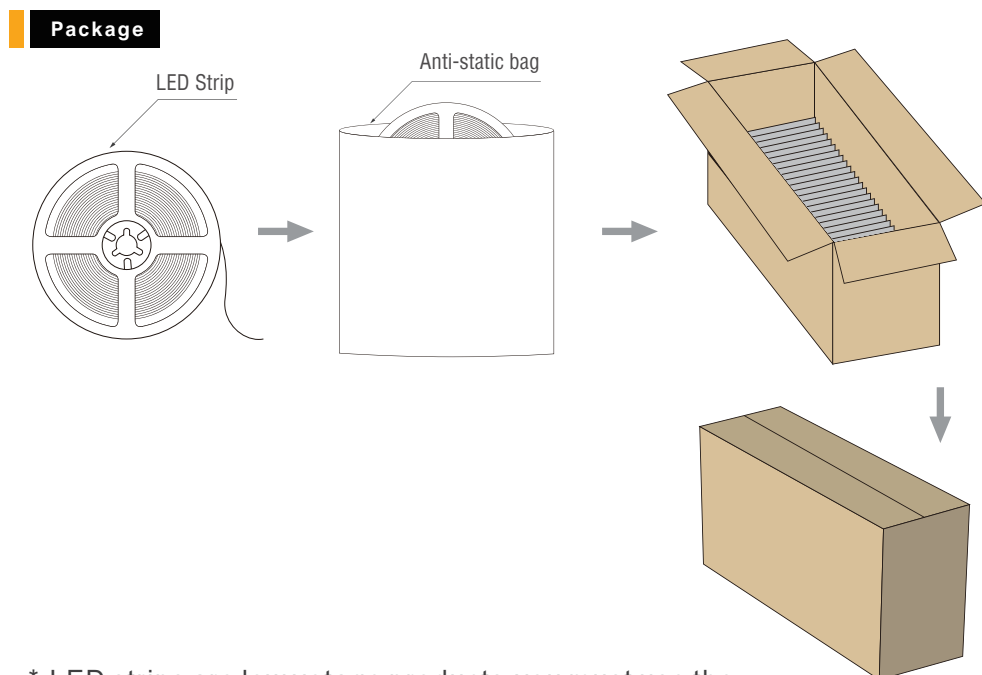


Distortion(Wrong)

## COB LED STRIP



Bend(Right)



\* LED strips are low voltage products, you must use the power supply(transformer). Please don't connect the led strip directly to the AC 110v or AC 240v, otherwise it will burn out the LED strips.

Clean up the installation surface, it will ensure the reliability of the adhesive, The electrical connection process must be operated by a professional person.